

Spring Machinery Consignment

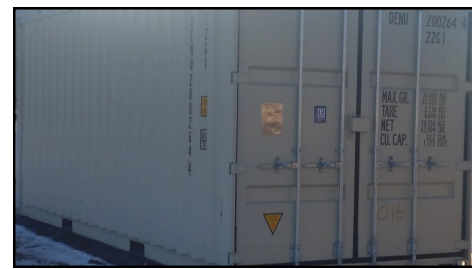
AUCTION

Saturday, March 11

10:00 a.m. - Online bidding @ 1:00 p.m.

1/2 Mile Northeast of

O'Neill, NE on Hwy. # 108



TRACTORS

IHC FARMALL 1256, Cab, New Paint, Interior & Clutch, Parade ready * JOHN DEERE 4050, Cab, Power Shift, Lower Hours * IHC FARMALL 706 w/ DUAL 340 Loader * FARMALL C w/KOSCH Belly Mower, 7' Bar * FARMALL H, NF * FORD 8N * *More Pending*

SKID STEER & ATTACHMENTS

LOWE 750 Hydraulic Digger, 12" Bit * STOUT 66-9 Grapple * STOUT 72-8 Grapple * STOUT HD72-4 Brush Grapple * STOUT Extra Heavy Duty 84-6 Brush Grapple * STOUT Heavy Duty 72-FB Grapple Bucket * STOUT 72-3 Rock Bucket Grapple * STOUT Heavy Duty 72-3 Open End Grapple Combo * STOUT Walk Thru 48" Pallet Forks * STOUT 48" Regular Pallet Forks * STOUT Add-on Grapple Fork * Heavy Duty 48" Walk Thru Pallet Forks, 48", 5500# Rated *

LIVESTOCK EQUIPMENT

(60) Continuous Fence Panels, 20', New * (20) 12' Portable Corral Panels, New * Trailer Load of Used Gates & Panels * Combination Panels * Pearson Cattle Chute * L-H Horse Hay Feeder * Single Bale Mover, Pull Type * *Partial Listing*

TERMS: Cash or good check day of sale. Insufficient Funds Checks will be prosecuted. Nebraska State Sales Tax collected. I.D. required to obtain buyer number. Any and all guarantees are between buyer and seller. Auction company is not responsible for accidents or theft. Advertising believed to be accurate, however, not guaranteed.

M & M AUCTIONS, LLC

P.O. Box 243 - O'Neill, NE

Matt McKay

Mark Durre

(402)340-1209

(402)340-4142

www.mmauctionsllc.com

EQUIPMENT

KRAMER Bale Processor, 6 Bale * FORD 460 Irrigation Engine on Cart, Natural Gas, Been Shredded * JOHN DEERE #37 Pull Type Sickle Mower, 9' Bar * JOHN DEERE #8 Sickle Mower * Snow Machine 7 1/2' Snow Blower, Hydraulic Chute * JOHN DEERE #400 Grinder Mixer * IHC Sickle Mower * Bale Fork * FARMHAND Stack Mover * KNIGHT Reel Auggie 3375 Mixer Feed Wagon w/ Scale * FARMHAND Grapple & Manure Bucket, Top Cylinder * Big A Dry Fertilizer Spreader * 4 Section Harrow on Cart * CUMMINS Engine, Auto * *More By Sale Time*

VEHICLES & TRAILERS

2017 Enclosed Trailer, 6' X 12', Rear Ramp Door, Side Door, NEW * 1983 FORD LTD Car, Good Condition, 85k Miles * 16' Tilt Bed Car Trailer * 1999 FORD F-250 4X4 Extended Cab, V10, Runs Good * Small 2 wheel trailer * 8' Pickup Flatbed * 16' + 2' Car Trailer w/ Ramps * 1978 CHEVROLET C65 Truck, Good Condition, Showing 38K Miles * *Others Pending*

MISCELLANEOUS

NEW 20' Storage Container * Used 40' Single Door Storage Container * (3) Longhorn Skulls * Set of 38" Tractor Tire Chains * Lots 3" & 5" Yellow Strap Rolls * Upright 15 Gallon Air Compressor * 10' X 10' Canopy Tent, Unused * Chain Saw * COAST TO COAST Gas Tiller * Lawn Edger * Pickup Toolbox * FARMALL H Tractor Book * Tap & Die Set * Miscellaneous Hand Tools * PACIFIC Gas Transfer Pump w/Hose, Used 1 Time * Trailer Load of Shop Tools * Shop 2 pc. Toolbox * 307 Engine, Disassembled * Commercial Round Electric Fan * Several Trailer Loads Tools & Shop Related * BILLY COOK Roping Saddle * *Lots More*

ONLINE BIDDING on select items will begin at 1:00 PM powered by "Bid Caller. Go to www.mmauctionsonline.com Click on the "Bid Caller Auction" link.